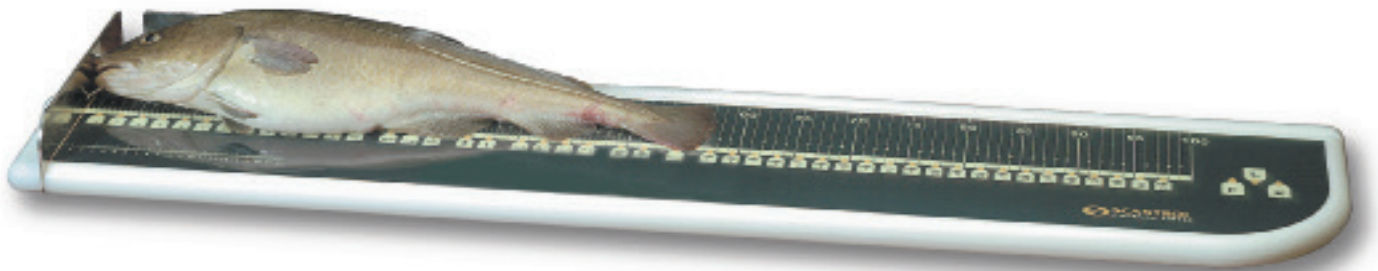


# FishMeter



## Electronic fish measuring board for efficient sampling

Scientists and fishery inspectors all over the world use the FishMeter electronic measuring board to achieve faster and more accurate registration and analysis of fish sampling data such as length, weight, sex and species. Data are recorded directly on the board with a magnetic marker and available on your computer for immediate analysis in your data handling software of choice, such as Excel.

The FishMeter has been developed in close collaboration with scientists and researchers in order to meet their demands for functionality and flexibility. The result is a highly efficient, durable and flexible solution for fish sampling suitable for fishery inspectors, laboratories, researchers, commercial fisheries and fish farmers. Whether registering length and weight of a large volume of fish or a range of parameters for each individual, the FishMeter will serve you as an invaluable tool.

Sampling with the FishMeter requires no pen or paper, saving you both time and resources. Recordings are made with a magnetic marker attached to your index finger, not affected by fish blood, dirt or water. Length recordings are made directly on the board, as are other parameters such as sex and number sequences. Recording of weight are done with separate scales. Please contact us for advice on how to integrate the FishMeter with your weight measurement procedures.

For recordings in noisy environments the FishMeter can be set to give an audible confirmation when new measurements are recorded. After finishing your sampling, the sturdy and waterproof measuring board can simply be hosed down.

### Size

- 50 cm (100 cm total length measurement)
- 100 cm (300 cm total length measurement)
- 120 cm (120 cm total length measurement)

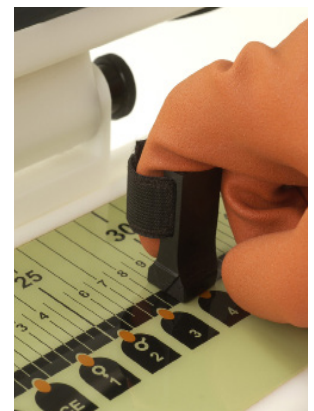


### Connection

- USB for easy and reliable connection to your Windows computer, laptop or tablet. The board is powered through your computer.
- Bluetooth for fish sampling on more remote locations where mobility is of importance. The wireless board is powered by rechargeable batteries.

### Software

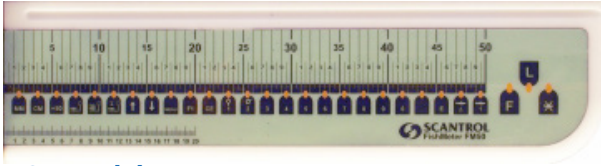
- FishMeter Link software interfaces the FishMeter to any application capable of receiving data input from a keyboard. The software offers user configurable keystroke sequences mapped to the function keys of the board and makes it possible to work directly in data handling spreadsheets such as Excel. FishMeter Link works with any device running Windows.
- FishMeter Windows driver is available for customers who want to integrate support for the FishMeter in their own software. A C#/.NET class library as well as a COM interface allows for integration with other application development frameworks, including Visual Basic for applications as used in Access or Excel based systems.
- Other software solutions are available from our partners, so please send us an email to discuss your sampling procedures and we will advise you on the best option for your need.



### MAGNETIC MARKER:

Measurements are done directly on the board with a magnetic marker attached to your finger. The magnet is not affected by blood, dirt or water.

## FishMeter 50 cm



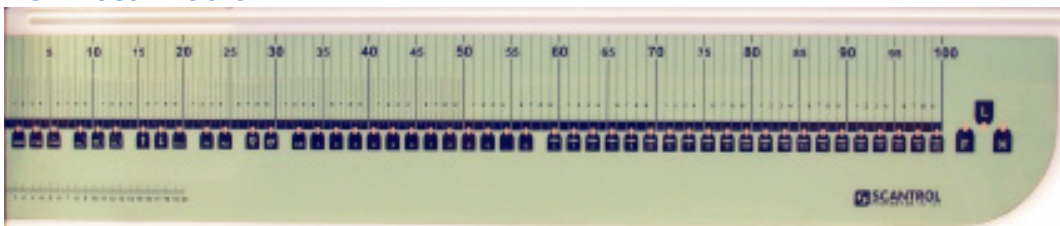
### USB model

FM-50USB	50 cm measuring board with USB
FM-USBC	USB cable for FishMeter
FM-MAP	Magnetic marker for pointing finger
<b>Software</b>	
FM-LINK	FishMeter Link software for Windows
FM-DRV	FishMeter driver
<b>Optional</b>	
FM-CS50	Carrying case for FishMeter 50 cm

### Wireless model

FM-50WLSS	50 cm wireless measuring board
FM-BAT	Battery for wireless FishMeter
FM-CHR	Battery charger for wireless FishMeter
FM-MAP	Magnetic marker for pointing finger
<b>Software</b>	
FM-LINK	FishMeter Link software for Windows
FM-DRV	FishMeter driver
<b>Optional</b>	
FM-CS50	Carrying case for FishMeter 50 cm

## FishMeter 100 cm



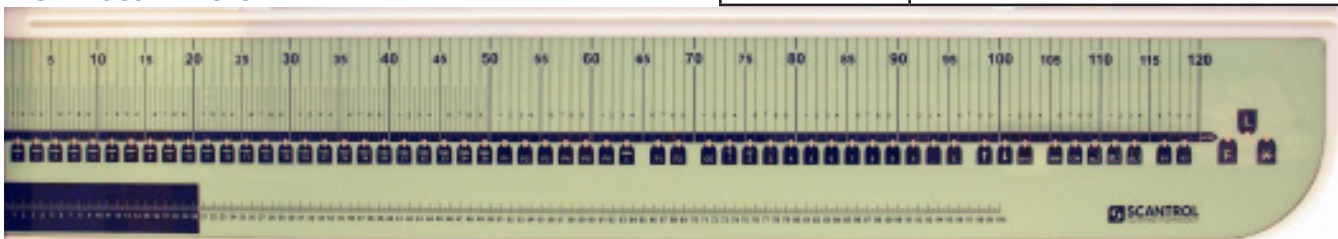
### USB model

FM-100USB	100 cm measuring board with USB
FM-USBC	USB cable for FishMeter
FM-MAP	Magnetic marker for pointing finger
<b>Software</b>	
FM-LINK	FishMeter Link software for Windows
FM-DRV	FishMeter driver
<b>Optional</b>	
FM-CS100	Carrying Case for FishMeter 100 cm

### Wireless model

FM-100WLSS	100 cm wireless measuring board
FM-BAT	Battery for wireless FishMeter
FM-CHR	Battery charger for wireless FishMeter
FM-MAP	Magnetic marker for pointing finger
FM-SW-M	FishMeter software for mobile
<b>Software</b>	
FM-LINK	FishMeter Link software for Windows
FM-DRV	FishMeter driver
<b>Optional</b>	
FM-CS100	Carrying case for FishMeter 100 cm

## FishMeter 120 cm



### USB model

FM-120USB	120 cm measuring board with USB
FM-USBC	USB cable for FishMeter
FM-MAP	Magnetic marker for pointing finger
<b>Software</b>	
FM-SW-W	FishMeter software for Windows
FM-LINK	FishMeter Link software for Windows
FM-DRV	FishMeter driver

### Wireless model

FM-100WLSS	100 cm wireless measuring board
FM-BAT	Battery for wireless FishMeter
FM-CHR	Battery charger for wireless FishMeter
FM-MAP	Magnetic marker for pointing finger
<b>Software</b>	
FM-LINK	FishMeter Link software for Windows
FM-DRV	FishMeter driver